

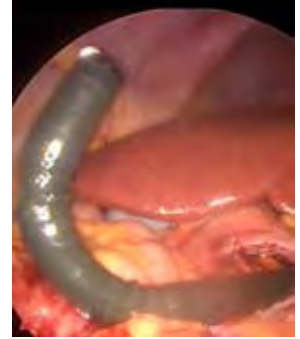


Frohning Auditorium | Case Western Reserve University School of Medicine, Cleveland, Ohio

Saturday January 12, 2008

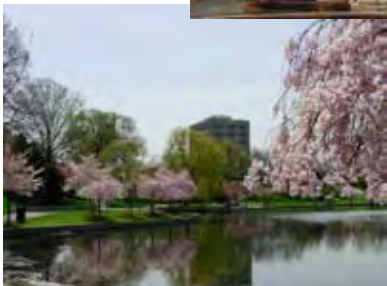
3<sup>rd</sup> ANNUAL

# NOTES: Current Status



Natural Orifice Transluminal  
Endoscopic Surgery

**COURSE DIRECTOR**  
Jeffrey Ponsky, MD



### Course Description

This course is an update in new technology for research and clinical application of NOTES. The course is for Gastroenterologists and Surgeons. This course is intended to provide an extensive update of current advances in new technology for research and clinical application of NOTES. The course will provide information regarding the techniques which will be encountered by the gastroenterologist and general surgeon. Course content will include state-of-the-art lectures, panel discussions, instructive video presentations and a porcine laboratory session.

### Educational Objectives

Upon completion of this course, participants will be able to:

1. Review history of NOTES.
2. Identify future applications of NOTES.
3. Learn how to set up a research lab for NOTES procedure.

### Continuing Education

The Case Western Reserve University School of Medicine is accredited by the Accreditation Council for Continuing Medical Education to provide continuing medical education for physicians.

The Case Western Reserve University School of Medicine designates this education activity for a maximum of **8 AMA PRA Category 1 credits™**. Physicians should only claim credit commensurate with the extent of their participation in the activity.

### Acknowledgment

Educational grants from corporate sponsors in support of this course are gratefully acknowledged. Acceptance of funding in support of this program does not constitute endorsement of any product or manufacturer.

**Policy Disclosure** The policy of the Case School of Medicine CME Program (Case) requires that the Activity Director, planning committee members and all activity faculty (that is, anyone in a position to control the content of the education activity) disclose to the activity participants all relevant financial relationships with commercial interests. Disclosure will be made to activity participants prior to the commencement of the activity. Case also requires that faculty make clinical recommendations based on the best available scientific evidence and that faculty identify any discussion of “off-label” or investigational use of pharmaceutical products or medical devices.

This course meets the guidelines as established in the “Framework for Post-Residency Surgical Education and Training” and is endorsed by the Society of American Gastrointestinal Endoscopic Surgeons (SAGES).

## AGENDA

## FACULTY

- 7:30 am Registration and Continental Breakfast
- 7:50 am Welcoming Remarks  
Jeffrey Ponsky, MD
- 8:00 am Overview and History of NOTES  
Jeffrey Ponsky, MD
- 8:15 am Gastrotomy Techniques: Access to Abdominal Cavity  
Michael Rosen, MD
- 8:30 am Closure Techniques: What Works and What is Available  
Jeffrey Marks, MD
- 8:50 am Other Natural Orifices as Access to the Abdomen: Vagina, Bladder, Colon  
Conor Delaney, MD
- 9:10 am REFRESHMENT BREAK
- 9:25 am Physiology of NOTES  
Michael McGee, MD
- 9:50 am Intraluminal Techniques: EUS, EMR, Full Thickness Resection  
Jeffrey Marks, MD
- 10:35 am From Lab to Humans  
Anthony Ignagni
- 10:50 am NOTES: Human Experience to Date  
Raymond Onders, MD
- 11:10 am Future Applications of NOTES  
Jeffrey Ponsky, MD
- 11:30 am Panel Discussion and Q & A  
Moderator: Jeffrey Ponsky, MD
- 12:00 pm Working Lunch
- 1:30 pm Hands-On Lab
- 5:00 pm Adjourn

### CASE WESTERN RESERVE UNIVERSITY SCHOOL OF MEDICINE FACULTY

Jeffrey Ponsky, MD  
Oliver H. Payne Professor and Chairman  
Department of Surgery  
Case Western Reserve University and  
University Hospitals Case Medical Center

Conor Delaney, MD, PhD  
Professor  
Vice Chairman, Department of Surgery  
Chief, Division of Colorectal Surgery  
University Hospitals Case Medical Center

Anthony Ignagni  
Surgical Research  
University Hospitals Case Medical Center  
Synapse Biomedical

Jeffrey Marks, MD  
Associate Professor  
Division of General Surgery  
University Hospitals Case Medical Center

Michael McGee, MD  
Surgical Resident  
University Hospitals Case Medical Center

Raymond Onders, MD  
Associate Professor of Surgery  
Director, Minimally Invasive Surgery  
Division of General Surgery  
University Hospitals Case Medical Center

Michael Rosen, MD  
Assistant Professor of Surgery  
Division of General Surgery  
University Hospitals Case Medical Center

# COURSE INFORMATION

## Meeting Location

Case Western Reserve University

**Frohning Auditorium**

## Parking

The Adelbert Visitor Parking Garage is accessible from Adelbert or Mayfield Roads. Exit the garage at ground level and proceed following arrows on map to the CWRU BRB Building. Take steps inside the building to the second floor. You are responsible for your own parking charges. Persons with disabilities should inform the Case CME Program of any special services required.



## Lodging Information

Baricelli Inn

(0.1 miles to Case)

2203 Cornell Road

Phone 216-791-6500

[www.baricelli.com](http://www.baricelli.com)

The Glidden House

(0.5 miles to Case)

1901 Ford Drive

Phone 216-231-8900

[www.gliddenhouse.com](http://www.gliddenhouse.com)



Wyndham At Playhouse Square

(4 miles to Case)

1260 Euclid Avenue

Cleveland, Ohio 44113

216/615-7500

[www.wyndham.com](http://www.wyndham.com)



Sheraton Independence Hotel

(10 miles to Case)

5300 Rockside Road

Independence, Ohio 44131

216/524-0700

[www.sheraton.com/independence](http://www.sheraton.com/independence)

Please contact these facilities directly to determine availability and make your reservation. For information on other accommodations in the University Circle area call the Case/UHHS CME Program at 216-844-5050 or 800-274-8263.





Registrar, Case/UHHS CME Program  
10524 Euclid Avenue  
Cleveland, OH 44195-6026

Register on-line at <http://cme.case.edu>